



**A multi-award winning second generation family owned business, Rock Fall has positioned itself at the forefront of the safety footwear industry through world first innovations that provide solutions to the ever-changing demands of modern businesses.**

---

The organisation is proud of its British heritage and our country's position as a world leader in Health and Safety. Retaining our status as an independent SME allows us to be agile, making swift but sustainable and carefully considered decisions.

---

In recent years, the company has rationalised and diversified its product offering to provide our customers with the collection they need to grow their business. Supplying exclusively via Authorised Distribution Partners, Rock Fall pro-actively work with major end-users and industry associations to improve Workplace Safety.

---



Working with the best, we deliver the most innovative Safety Footwear available on the market. We partner directly with the world's leading component manufacturers to develop next level products.

---

Rock Fall have a strong track record of developing world first products which range from Internal Metatarsal Protection, Electrical Hazard protection for the European market and outstanding performance in extreme temperatures variances from -40°C to 300°C.

---

## STANDARDS & TECHNOLOGIES

Throughout this brochure you will find details and explanations of different test methods and standards.

The European standard for Safety footwear is  
EN ISO 20345:2011

and the commonly listed specifications are:

Protective toecap, midsole  
and anti-static properties

S1P

Protective toecap, midsole, anti-static properties  
with a water repellent upper

S3

Moulded polymer/rubber upper making them  
waterproof and leak proof with protective toecap,  
midsole and anti-static properties

S5

Within this standard there are several markings that denote a style has passed a test method.  
For clarity, Rock Fall have taken the decision to categorise these and then standardise their running order.

Safety Standards  
P E WRU FO

Temperature Resistance  
HI CI HRO

Optional Standards  
WR M AN CR Wg F

Slip  
SRA SRC

Electrostatic Property - Resistance or Leakage Standard  
CA I ESD EH

## SPECIALIST STANDARDS AND MARKINGS

### European standards

#### ESD

EN ISO 61340-4-3:2007  
(superseded by 2016)

Tested in accordance with EN ISO 61340-4-3:2018 to offer ESD protection in conjunction with other ESD control measures, the maximum result allowed on Rock Fall production is 35M.

#### Chainsaw

BS EN 17249:2013 Class 3

Class 3  
28 metres per second (63 mph)  
(5512 feet per minute)

#### Foundry Footwear

EN ISO 20349-2:2017

Wg  
Molten Metal Splinters  
i.e. welding sparks (Welding Boots)  
Fe  
Iron Splash (Foundry boots)

#### Dielectric

EN 50321-1:2018 Class 0

Class 0  
1kV proof test to provide insulation  
protection in working use to 5kV

#### Chemical

EN 13832-2:2018 Type U

Upper tested against:  
40% (K) Sodium Hydroxide  
96% (L) Sulphuric Acid.  
The upper contact can be  
intermittent, not exceeding  
one hour.

### American standards

#### Full American Mens

ASTM F2413-18 M/I/C EH PR

M/F  
footwear designed for men/women  
I  
Impact resistance

#### Full American Womens

ASTM F2413-18 F/I/C EH PR

C  
Compression resistance  
PR  
Penetration resistant midsole

#### EH only

ASTM F2413-18 EH

EH  
Electrically insulating sole unit against 18kV

#### Dielectric

ASTM F1117-03

20kV proof test to provide insulation  
protection in working use to 20kV

**Please note** this page is intended as an overview of markings as per the standard and does not refer to any of the additional testing that Rock Fall undertakes above the relevant standards. For latest and most comprehensive standards information please visit [rockfall.com/conformity](http://rockfall.com/conformity)

## TECHNOLOGIES

### Durability and Comfort

**FORCE10**

**DUALFS**  
ANTI-WEAR THICKEN SYSTEM

**IMPACT SHIELD**  
WITH SHOCK MET CONTROL

**IMPACT SHIELD**  
WITH SHOCK ABSORBING PLATE

**activ step** COMFORT FOOTBEDS

**activ step** SHOCK ABSORBING OUTSOLES

**Ortholite**  
comfort foam insoles

**BASF**  
We create chemistry

### Uppers, Linings and Membranes

**ACTIV TEX**

**MOISTURE-TECH**  
BY SHIPPER

**SympaTex**

**HELCOR**  
WATER-RESISTANT

**Thinsulate**  
INSULATION

**Thinsulate Ultra**  
INSULATION

### Fastening and Stitching

**BOA**  
FITTING SYSTEM

**YKK**  
Little Boots Big Differences

**RTEN**  
AMERICAN RESISTANT THREAD

**RTEN**  
FLAME RESISTANT THREAD

## FEATURE KEYS

To check the feature keys on our products please visit [rockfall.com](http://rockfall.com)

ELECTROSTATIC PROPERTY	Anti-Static	Dielectric	Electrical Hazard	Conductive	ESD					
SAFETY STANDARDS	Oil Resistant	Protective Midsole	Protective Toecap	SRC Slip Rated	Water Repellent Upper					
TEMPERATURE RESISTANCE	Cold Insulation	Heat Resistant Outsole To 300°C	Hi Resistant Outsole To 150°C							
ENHANCED TESTS	Enhanced Chemical Resistance	Foundry Boot Certified	Jet Wash Protection	Metatarsal Protection	Welding Boot Certified	Class 3 Chainsaw Protection	Waterproof Membrane			
COMPONENTS	100% Non-Metallic Construction	Climbing Irons Compatible	Internal Digging Plate	Ladder Grip	Washable	Zip Fastening				
MATERIALS	Flame Resistant Leather	Flame Resistant Stitching	Flame Resistant Fastening	Vegan Friendly	Sustainable					
FIT	Large Sizes Available 14+	Small Sizes Available 2+	Wide Fitting	Women's Fit						



- REF: TC1070  
**DENVER**  
UK 6-13  
EN ISO 20345:2011 S3 HI HRO WR SRC + ASTM F2413-18 M/IC PR
- Water repellent full grain black leather stitched with R-TEN® abrasion resistant thread
  - Protective fibreglass toecap and composite anti-penetration flexi-midsole
  - Activ-Tex® waterproof and breathable bootie membrane - tested for 8 hours (5 times longer than EN requirement)
  - FORCE10® scuff cap and solid nitrile rubber outsole - tested to extraordinary abrasion, heat and cold performance levels
  - Anti-fatigue EVA footbed with IMPACT SHIELD™ shock reducing internal digging plate

Full product detail at [rockfall.com/products/denver](http://rockfall.com/products/denver)



- REF: RF4500  
**TITANIUM**  
UK 3-14  
EN ISO 20345:2011 S3 HI CI HRO WR SRC + ASTM F2413-18 M/IC PR
- Polishable water repellent full grain black leather stitched with R-TEN® abrasion resistant thread and no. 8 YKK side zip
  - Protective fibreglass toecap and composite anti-penetration flexi-midsole
  - Activ-Tex® waterproof and breathable bootie membrane - tested for 8 hours (5 times longer than EN requirement)
  - FORCE10® scuff cap and solid nitrile rubber outsole - tested to extraordinary abrasion, heat and cold performance levels
  - Anti-fatigue EVA footbed with IMPACT SHIELD™ shock reducing internal digging plate

Full product detail at [rockfall.com/products/titanium](http://rockfall.com/products/titanium)



- REF: RF460  
**SLATE**  
UK 3-15  
EN ISO 20345:2011 S3 HRO WR SRC
- Polishable water repellent full grain black leather
  - Protective fibreglass toecap and composite anti-penetration flexi-midsole
  - Activ-Tex® waterproof and breathable bootie membrane - tested for 8 hours (5 times longer than EN requirement)
  - FORCE10® scuff cap and dual density PU nitrile rubber outsole - Tested to extraordinary abrasion, heat and cold performance levels
  - Activ-Step® dual footbed - choice of anti-fatigue PU and heel cupping EVA

Full product detail at [rockfall.com/products/slate](http://rockfall.com/products/slate)



- REF: RF470  
**CLAY**  
UK 3-15  
EN ISO 20345:2011 S3 HRO WR SRC
- Water repellent full grain black leather
  - Protective fibreglass toecap and composite anti-penetration flexi-midsole
  - Activ-Tex® waterproof and breathable bootie membrane - tested for 8 hours (5 times longer than EN requirement)
  - FORCE10® scuff cap and dual density PU nitrile rubber outsole - Tested to extraordinary abrasion, heat and cold performance levels
  - Activ-Step® dual footbed - choice of anti-fatigue PU and heel cupping EVA

Full product detail at [rockfall.com/products/clay](http://rockfall.com/products/clay)



- REF: TC3000  
**RHYOLITE**  
UK 3-14  
EN ISO 20345:2011 S3 HI HRO WR M SRC
- Water repellent full grain black leather stitched with R-TEN® abrasion resistant thread
  - Protective fibreglass toecap, composite anti-penetration flexi-midsole and internal metatarsal guard
  - Activ-Tex® waterproof and breathable bootie membrane - tested for 8 hours (5 times longer than EN requirement)
  - FORCE10® scuff cap and solid nitrile rubber outsole - tested to extraordinary abrasion, heat and cold performance levels
  - Anti-fatigue EVA footbed with IMPACT SHIELD™ shock reducing internal digging plate

Full product detail at [rockfall.com/products/rhyolite](http://rockfall.com/products/rhyolite)



- REF: RF540  
**MONZONITE**  
UK 5-14  
EN ISO 20345:2011 S3 HI CI HRO WR M SRC
- Water repellent full grain black leather stitched with R-TEN® abrasion resistant thread and no. 8 YKK side zip
  - Protective fibreglass toecap, composite anti-penetration flexi-midsole and internal metatarsal guard
  - Moisture-tech by Sympatex® waterproof and breathable bootie membrane - tested for 100 hours (74 times longer than EN requirement)
  - FORCE10® scuff cap and solid nitrile rubber outsole - tested to extraordinary abrasion, heat and cold performance levels
  - Anti-fatigue EVA footbed with IMPACT SHIELD™ shock reducing internal digging plate

Full product detail at [rockfall.com/products/monzonite](http://rockfall.com/products/monzonite)



- REF: RF70  
**TEXAS**  
UK 3-14  
EN ISO 20345:2011 S3 HI CI HRO WR SRC+ ASTM F 2413-18 M/IC PR
- Water repellent oil tanned brown leather stitched with R-TEN® abrasion resistant thread
  - Protective fibreglass toecap and composite anti-penetration flexi-midsole
  - Activ-Tex® waterproof and breathable bootie membrane - tested for 8 hours (5 times longer than EN requirement)
  - FORCE10® scuff cap and solid nitrile rubber outsole - tested to extraordinary abrasion, heat and cold performance levels
  - Anti-fatigue EVA footbed with IMPACT SHIELD™ shock reducing internal digging plate

Full product detail at [rockfall.com/products/texas](http://rockfall.com/products/texas)



- REF: RF290  
**SILT**  
UK 3-13 (INC 6.5 and 10.5)  
EN ISO 20345:2011 S5 CI HRO SRC
- Waterproof 5mm neoprene upper - certified to -40°C
  - Protective fibreglass toecap and composite anti-penetration flexi-midsole Moisture wicking breathable mesh fabric lining
  - FORCE10® solid nitrile rubber outsole - tested to extraordinary abrasion, heat and cold performance levels
  - Activ-Step® PU anti-fatigue comfort footbed

Full product detail at [rockfall.com/products/silt](http://rockfall.com/products/silt)



REF: RF610  
**HONEYSTONE**  
UK 3-16

EN ISO 20345:2011 S3 HI HRO WR SRC

- Water repellent honey nubuck and Boa® fit system
- Protective fibreglass toecap and composite anti-penetration flexi-midsole
- Moisture-tech by Sympatex® waterproof and breathable bootie membrane - tested for 100 hours (74 times longer than EN requirement)
- FORCE10® scuff cap and solid nitrile rubber outsole - tested to extraordinary abrasion, heat and cold performance levels
- Ortholite® climate breathable footbed with IMPACT SHIELD™ shock reducing internal digging plate



Full product detail at [rockfall.com/products/honeystone](http://rockfall.com/products/honeystone)



REF: RF611  
**DOLOMITE**  
UK 3-16

EN ISO 20345:2011 S3 HI HRO WR SRC

- Polishable water repellent full grain black leather and Boa® fit system
- Protective fibreglass toecap and composite anti-penetration flexi-midsole
- Moisture-tech by Sympatex® waterproof and breathable bootie membrane - tested for 100 hours (74 times longer than EN requirement)
- FORCE10® scuff cap and solid nitrile rubber outsole - tested to extraordinary abrasion, heat and cold performance levels
- Ortholite® climate breathable footbed with IMPACT SHIELD™ shock reducing internal digging plate



Full product detail at [rockfall.com/products/dolomite](http://rockfall.com/products/dolomite)



REF: RF709  
**LAVA**  
UK 6-12

EN ISO 20345:2011 S3 HI HRO WR M SRC

- Water repellent full grain black leather and Boa® fit system
- Protective fibreglass toecap, composite anti-penetration flexi-midsole and internal metatarsal guard
- Moisture-tech by Sympatex® waterproof and breathable bootie membrane - tested for 100 hours (74 times longer than EN requirement)
- FORCE10® scuff cap and solid nitrile rubber outsole - tested to extraordinary abrasion, heat and cold performance levels
- Ortholite® climate breathable footbed with IMPACT SHIELD™ shock reducing internal digging plate



Full product detail at [rockfall.com/products/lava](http://rockfall.com/products/lava)



REF: RF710  
**MAGMA**  
UK 6-12

EN ISO 20345:2011 S3 HI HRO WR M SRC

- Water repellent full grain black leather and Boa® fit system
- Protective fibreglass toecap, composite anti-penetration flexi-midsole and internal metatarsal guard
- Moisture-tech by Sympatex® waterproof and breathable bootie membrane - tested for 100 hours (74 times longer than EN requirement)
- FORCE10® scuff cap and solid nitrile rubber outsole - tested to extraordinary abrasion, heat and cold performance levels
- Ortholite® climate breathable footbed with IMPACT SHIELD™ shock reducing internal digging plate



Full product detail at [rockfall.com/products/magma](http://rockfall.com/products/magma)



REF: PM4008  
**BALTIMORE**  
UK 3-15

EN ISO 20345:2011 S3 WR SRC + ASTM F 2413-18 M/I/C PR

- Water repellent smooth black leather
- Protective fibreglass toecap and composite anti-penetration flexi-midsole
- Activ-Tex® waterproof and breathable bootie membrane - tested for 8 hours (5 times longer than EN requirement)
- Activ-Step® shock absorbing PU outsole Anti-fatigue EVA footbed



Full product detail at [rockfall.com/products/baltimore](http://rockfall.com/products/baltimore)



REF: PM5008  
**DELAWARE**  
UK 3-15

EN ISO 20345:2011 S3 WR SRC

- Water repellent smooth black leather and no. 8 YKK side zip
- Protective fibreglass toecap and composite anti-penetration flexi-midsole
- Activ-Tex® waterproof and breathable bootie membrane - tested for 8 hours (5 times longer than EN requirement)
- Activ-Step® shock absorbing PU outsole Anti-fatigue EVA footbed



Full product detail at [rockfall.com/products/delaware](http://rockfall.com/products/delaware)



REF: PM4003  
**GEORGIA**  
UK 3-16

EN ISO 20345:2011 S3 WR SRC

- Polishable water repellent smooth black leather
- Protective fibreglass toecap and composite anti-penetration flexi-midsole
- Activ-Tex® waterproof and breathable bootie membrane - tested for 8 hours (5 times longer than EN requirement)
- Activ-Step® shock absorbing PU outsole Anti-fatigue EVA footbed



Full product detail at [rockfall.com/products/georgia](http://rockfall.com/products/georgia)

We're working on the next generation of sustainable safety footwear, look out for styles marked with our new **CORE** logo in this document and going forward.  
More at [rockfall.com/sustainability](http://rockfall.com/sustainability)





Thinsulate



REF: RF001  
**ALASKA**  
UK 3-14

EN ISO 20345:2011 S3 CI HRO SRC + ASTM F 2413-18 M/I/C PR

- Water repellent full grain black leather
- Protective fibreglass toecap and composite anti-penetration flexi-midsole
- 3M Thinsulate B600 Ultra fur lining - certified to -40°C
- Shock absorbing nitrile rubber outsole Anti-fatigue fur EVA footbed

Full product detail at [rockfall.com/products/alaska](http://rockfall.com/products/alaska)



Thinsulate



REF: RF040  
**MANITOBA**  
UK 5-13

EN ISO 20345:2011 S3 HI CI HRO SRC + ASTM F 2413-18 M/I/C PR

- Water repellent full grain black leather with no. 8 YKK side zip
- Protective fibreglass toecap and composite anti-penetration flexi-midsole
- 3M Thinsulate B600 Ultra fur lining - certified to -40°C
- Shock absorbing nitrile rubber outsole Anti-fatigue fur EVA footbed

Full product detail at [rockfall.com/products/manitoba](http://rockfall.com/products/manitoba)



YKK



REF: RF222  
**JET**  
UK 3-15

EN ISO 20345:2011 S3 HRO WR SRC

- Polishable water repellent full grain black leather with No. 8 YKK side zip
- Protective fibreglass toecap and composite anti-penetration flexi-midsole
- Activ-Tex® waterproof and breathable bootie membrane - tested for 8 hours (5 times longer than EN requirement)
- FORCE10® dual density PU nitrile rubber outsole - tested to extraordinary abrasion, heat and cold performance levels
- Activ-Step® PU anti-fatigue comfort footbed

Full product detail at [rockfall.com/products/jet](http://rockfall.com/products/jet)



YKK



REF: RF333  
**MELANITE**  
UK 3-15

EN ISO 20345:2011 S3 HRO WR SRC

- Polishable water repellent full grain black leather with no. 8 YKK side zip
- Protective fibreglass toecap and composite anti-penetration flexi-midsole
- Activ-Tex® waterproof and breathable bootie membrane - tested for 8 hours (5 times longer than EN requirement)
- FORCE10® dual density PU nitrile rubber outsole - tested to extraordinary abrasion, heat and cold performance levels
- Activ-Step® PU anti-fatigue comfort footbed

Full product detail at [rockfall.com/products/melanite](http://rockfall.com/products/melanite)



FORCE10



REF: RF170  
**GRANITE**  
UK 5-15 (INC 6.5 and 10.5)

EN ISO 20345:2011 S3 HI CI HRO SRC

- Water repellent full grain black leather
- Protective steel toecap and composite anti-penetration flexi-midsole
- Moisture wicking breathable mesh fabric lining
- FORCE10® scuff cap and solid nitrile rubber outsole - tested to extraordinary abrasion, heat and cold performance levels
- Anti-fatigue EVA footbed with IMPACT SHIELD™ shock reducing internal digging plate

Full product detail at [rockfall.com/products/granite](http://rockfall.com/products/granite)



FORCE10



REF: RF10  
**EBONITE**  
UK 5-14

EN ISO 20345:2011 S3 HI CI HRO SRC

- Water repellent full grain black leather
- Protective steel toecap and composite anti-penetration flexi-midsole
- Moisture wicking breathable mesh fabric lining
- FORCE10® scuff cap and solid nitrile rubber outsole - tested to extraordinary abrasion, heat and cold performance levels
- Anti-fatigue EVA footbed with IMPACT SHIELD™ shock reducing internal digging plate

Full product detail at [rockfall.com/products/ebonite](http://rockfall.com/products/ebonite)



YKK



REF: RF15  
**SHALE**  
UK 3-15

EN ISO 20345:2011 S3 HI CI HRO SRC

- Water repellent full grain black leather with no. 8 YKK side zip
- Protective steel toecap and composite anti-penetration flexi-midsole
- Moisture wicking breathable mesh fabric lining
- FORCE10® scuff cap and solid nitrile rubber outsole - tested to extraordinary abrasion, heat and cold performance levels
- Anti-fatigue EVA footbed with IMPACT SHIELD™ shock reducing internal digging plate

Full product detail at [rockfall.com/products/shale](http://rockfall.com/products/shale)



BASF



REF: RF250  
**RHODIUM**  
UK 3-13

EN ISO 20345:2011 S3 WR SRC + EN 13832-2:2018 / Type U / K + L / 200I-A-E-WV-PY

- Eco-Lorica chemical resistant microfibre upper - tested against most common chemicals
- Protective fibreglass toecap and composite anti-penetration flexi-midsole
- Activ-Tex® waterproof and breathable bootie membrane - tested for 8 hours (5 times longer than EN requirement)
- BASF chemical resistant PU outsole - tested against most common chemicals
- Anti-fatigue EVA footbed

Full product detail at [rockfall.com/products/rhodium](http://rockfall.com/products/rhodium)



**REF: RF210**  
**SWILL**  
UK 7-13 (INC 10.5)  
EN ISO 20345:2011 S5 M SRC

- Waterproof yellow PVC with protective guard rated to 800bar (or 11'600 PSI)
- Protective steel toecap, stainless steel anti-penetration midsole and internal metatarsal guard
- Mesh to PVC laminate lining
- Shock absorbing virgin PVC outsole

**IMPACT SHIELD**

Full product detail at [rockfall.com/products/swill](http://rockfall.com/products/swill)



**REF: RF328**  
**CHATSWORTH**  
UK 6-13 (INC 6.5 and 10.5)  
EN ISO 20345:2011 SB P E WRU FO CI HRO WR SRC + ASTM F 2413-18 M/IC EH PR + BS EN 17249:2013

- Water repellent full grain black leather with Helcor abrasion resistant leather stitched with R-TEN® abrasion resistant thread
- Protective steel toecap and composite anti-penetration flexi-midsole
- Moisture-tech by Sympatex® waterproof and breathable bootie membrane - tested for 100 hours (74 times longer than EN requirement)
- FORCE10® scuff cap and dual density PU nitrile rubber outsole - tested to extraordinary abrasion, heat and cold performance levels
- Ortholite® climate breathable footbed with IMPACT SHIELD™ shock reducing internal digging plate

**MOISTURE-TECH**

Full product detail at [rockfall.com/products/chatsworth](http://rockfall.com/products/chatsworth)



**REF: RF800**  
**POWERMAX**  
UK 5-14 (INC 6.5 and 10.5)  
EN ISO 20345:2011 SB P CI E FO WRU HRO WR SRC + ASTM F 2413-18 M/IC EH PR + AS 2210.3:2019 SB P CI E FO WRU HRO WR SRC

- Water repellent full grain black leather with Helcor abrasion resistant leather stitched with R-TEN® abrasion resistant thread
- Protective fibreglass toecap and composite anti-penetration flexi-midsole
- Moisture-tech by Sympatex® waterproof and breathable bootie membrane - tested for 100 hours (74 times longer than EN requirement)
- FORCE10® scuff cap and dual density PU nitrile rubber outsole - tested to extraordinary abrasion, heat and cold performance levels
- Ortholite® climate breathable footbed with IMPACT SHIELD™ shock reducing internal digging plate

**MOISTURE-TECH**

Full product detail at [rockfall.com/products/powermax](http://rockfall.com/products/powermax)



**REF: RF900**  
**POWER**  
UK 5-13 (INC 6.5 and 10.5)  
EN ISO 20345:2011 SB P CI E FO WRU HRO WR SRC + ASTM F 2413-18 M/IC EH PR + AS 2210.3:2019 SB P CI E FO WRU HRO WR SRC

- Water repellent full grain black leather stitched with R-TEN® abrasion resistant thread
- Protective fibreglass toecap and composite anti-penetration flexi-midsole
- Moisture-tech by Sympatex® waterproof and breathable bootie membrane - tested for 100 hours (74 times longer than EN requirement)
- FORCE10® scuff cap and dual density PU nitrile rubber outsole - tested to extraordinary abrasion, heat and cold performance levels
- Ortholite® climate breathable footbed with IMPACT SHIELD™ shock reducing internal digging plate

**MOISTURE-TECH**

Full product detail at [rockfall.com/products/power](http://rockfall.com/products/power)



**REF: RF810**  
**ARC**  
UK 5-13 (INC 6.5 and 10.5)  
EN ISO 20345:2011 SB P CI E FO WRU HRO WR SRC + ASTM F 2413-18 M/IC EH PR + AS 2210.3:2019 SB P CI E FO WRU HRO WR SRC

- Water repellent full grain black leather with Helcor abrasion resistant leather stitched with R-TEN® abrasion resistant thread and enhanced flame-resistant laces
- Protective fibreglass toecap and composite anti-penetration flexi-midsole
- Moisture-tech by Sympatex® waterproof and breathable bootie membrane - tested for 100 hours (74 times longer than EN requirement) with full grain leather lining
- FORCE10® scuff cap and dual density PU nitrile rubber outsole - tested to extraordinary abrasion, heat and cold performance levels
- Ortholite® climate breathable footbed with IMPACT SHIELD™ shock reducing internal digging plate

**MOISTURE-TECH**

Full product detail at [rockfall.com/products/arc](http://rockfall.com/products/arc)



**REF: RF910**  
**SURGE**  
UK 3-16 (INC 6.5 and 10.5)  
EN ISO 20345:2011 SB P E WRU FO CI HRO WR SRC + ASTM F 2413-18 M/IC EH PR

- Water repellent full grain black leather
- Protective fibreglass toecap and composite anti-penetration flexi-midsole
- Activ-Tex® waterproof and breathable bootie membrane - tested for 8 hours (5 times longer than EN requirement)
- FORCE10® Dual density PU nitrile rubber outsole - tested to extraordinary abrasion, heat and cold performance levels
- Activ-Step® PU anti-fatigue comfort footbed

**ACTIV-TEX**

Full product detail at [rockfall.com/products/surge](http://rockfall.com/products/surge)

AS A BUSINESS WE HAD BEEN WAITING FOR AN ELECTRICAL HAZARD BOOT WHICH WAS CE MARKED TO COME ON TO THE MARKET, SO WE WERE MORE THAN HAPPY TO WORK WITH ROCK FALL ON THE DEVELOPMENT OF THESE WORK BOOTS.

THROUGHOUT THE PROCESS ROCK FALL HAVE LISTENED TO OUR FEEDBACK AND THE RESULT IS TWO STYLES OF WORK BOOT THAT ARE FIT FOR PURPOSE, COMFORTABLE, ROBUST AND MEET WPD'S MINIMUM STANDARDS FOR FOOTWEAR.

**WESTERN POWER DISTRIBUTION**  
Serving the Midlands, South West and Wales

WE'VE POSITIONED OURSELVES AT THE FOREFRONT OF THE INDUSTRY BY DESIGNING AND MANUFACTURING THE MOST SPECIALIST SAFETY FOOTWEAR AVAILABLE ON THE MARKET, GOT A CRAZY IDEA? WE'D LOVE TO DISCUSS IT.



REF: RF660  
**CHROMITE**  
UK 3-16 (INC 6.5 and 10.5)

EN ISO 20345:2011 S3 SRC

- Polishable water repellent full grain black leather
- Protective fibreglass toecap and composite anti-penetration flexi-midsole
- Moisture wicking breathable mesh fabric lining
- Activ-Step® shock absorbing PU outsole
- Activ-Step® PU anti-fatigue comfort footbed



activ  
step

Full product detail at [rockfall.com/products/chromite](http://rockfall.com/products/chromite)



REF: RF670  
**GRAPHITE**  
UK 3-16 (INC 6.5 and 10.5)

EN ISO 20345:2011 S3 SRC

- Polishable water repellent full grain black leather
- Protective fibreglass toecap and composite anti-penetration flexi-midsole
- Moisture wicking breathable mesh fabric lining
- Activ-Step® shock absorbing PU outsole
- Activ-Step® PU anti-fatigue comfort footbed



activ  
step

Full product detail at [rockfall.com/products/graphite](http://rockfall.com/products/graphite)



REF: VX400  
**AMBER**  
UK 2-8

EN ISO 20345:2011 S3 SRC

- Polishable water repellent full grain black leather
- Protective steel toecap and composite anti-penetration flexi-midsole
- Moisture wicking breathable mesh fabric lining
- Womens fitting shock absorbing dual density PU outsole
- Anti-fatigue EVA footbed



Full product detail at [rockfall.com/products/amber](http://rockfall.com/products/amber)



REF: VX500  
**EMERALD**  
UK 2-8

EN ISO 20345:2011 S3 SRC

- Polishable water repellent full grain black leather
- Protective steel toecap and composite anti-penetration flexi-midsole
- Moisture wicking breathable mesh fabric lining
- Womens fitting shock absorbing dual density PU outsole
- Anti-fatigue EVA footbed



Full product detail at [rockfall.com/products/emerald](http://rockfall.com/products/emerald)



REF: VX530  
**TOPAZ**  
UK 2-8

EN ISO 20345:2011 S3 SRC

- Polishable water repellent full grain black leather
- Protective steel toecap and composite anti-penetration flexi-midsole
- Moisture wicking breathable mesh fabric lining
- Womens fitting shock absorbing dual density PU outsole
- Anti-fatigue EVA footbed



Full product detail at [rockfall.com/products/topaz](http://rockfall.com/products/topaz)



REF: TC500  
**BROOKLYN**  
UK 6-12

EN ISO 20345:2011 S3 SRC + EN 61340-4-3:2018 ESD

- Polishable water repellent smooth black leather
- Protective steel toecap and composite anti-penetration flexi-midsole
- Moisture wicking breathable mesh fabric lining
- Shock absorbing dual density PU outsole
- Anti-fatigue EVA footbed



Full product detail at [rockfall.com/products/brooklyn](http://rockfall.com/products/brooklyn)



REF: RF111  
**GRAPHENE**  
UK 3-15 (INC 6.5 and 10.5)

EN ISO 20345:2011 S3 HRO SRC

- Polishable water repellent full grain black leather
- Protective fibreglass toecap and composite anti-penetration flexi-midsole
- Moisture wicking breathable mesh fabric lining
- FORCE10® dual density PU nitrile rubber outsole - Tested to extraordinary abrasion, heat and cold performance levels
- Activ-Step® PU anti-fatigue comfort footbed



FORCE10

Full product detail at [rockfall.com/products/graphene](http://rockfall.com/products/graphene)



REF: TC340  
**DAKOTA**  
UK 6-14

EN ISO 20345:2011 S3 SRC

- Polishable water repellent full grain black leather
- Protective fibreglass toecap and composite anti-penetration flexi-midsole
- Moisture wicking breathable mesh fabric lining
- Shock absorbing dual density PU nitrile rubber outsole
- Activ-Step® PU anti-fatigue comfort footbed



activ  
step

Full product detail at [rockfall.com/products/dakota](http://rockfall.com/products/dakota)





REF: RFO08  
**FARADRI**

UK 3-16 (INC 6.5 and 10.5)

EN ISO 20345:2011 S3 SRC + EN 61340-4-3:2018 ESD

- Water repellent Sympatex® climate upper
- Protective fibreglass toecap and composite anti-penetration flexi-midsole
- Sympatex® climate moisture wicking breathable mesh fabric lining
- Shock absorbing EPR outsole Ortholite® climate breathable footbed



REF: RF120  
**TESLADRI**

UK 3-16 (INC 6.5 and 10.5)

EN ISO 20345:2011 S3 SRC + EN 61340-4-3:2018 ESD

- Water repellent Sympatex® climate upper
- Protective fibreglass toecap and composite anti-penetration flexi-midsole
- Sympatex® climate moisture wicking breathable mesh fabric lining
- Shock absorbing EPR outsole Ortholite® climate breathable footbed



Full product detail at [rockfall.com/products/faradri](http://rockfall.com/products/faradri)

Full product detail at [rockfall.com/products/tesladri](http://rockfall.com/products/tesladri)



REF: RFO09  
**MERCURY**

UK 6-12

EN ISO 20345:2011 S3 SRC + EN 61340-4-3:2018 ESD

- Water repellent mesh upper with 3D printed styling
- Protective fibreglass toecap and composite anti-penetration flexi-midsole
- Moisture wicking breathable mesh fabric lining
- Shock absorbing EPR outsole
- Ortholite® climate breathable footbed



REF: RF110  
**LUNA**

UK 6-13

EN ISO 20345:2011 S1P SRC + EN 61340-4-3:2018 ESD

- Highly breathable mesh upper with 3D printed styling and Boa® fit system
- Protective fibreglass toecap and composite anti-penetration flexi-midsole
- Moisture wicking breathable mesh fabric lining
- Shock absorbing dual density EVA nitrile rubber outsole
- Ortholite® climate breathable footbed



Full product detail at [rockfall.com/products/mercury](http://rockfall.com/products/mercury)

Full product detail at [rockfall.com/products/luna](http://rockfall.com/products/luna)



REF: RFO02  
**ZINC**

UK 3-16 (INC 6.5 and 10.5)

EN ISO 20345:2011 SB P E WRU FO HRO SRC C + ASTM F 2413-18 M/I/C Cd PR

- Water repellent full grain leather
- Protective fibreglass toecap and composite anti-penetration flexi-midsole
- Moisture wicking breathable mesh fabric lining
- Fully conductive shock absorbing dual density EVA nitrile rubber outsole which remains conductive throughout wear
- Fully conductive Activ-Step® carbonised anti-fatigue comfort footbed



REF: RF5000  
**SPARK**

UK 3-14

EN ISO 20349-2:2017 S3 HI CI HRO SRC Wg

- Flame Retardant full grain black leather stitched with R-TEN® FR thread
- Protective fibreglass toecap and composite anti-penetration flexi-midsole
- Moisture wicking breathable mesh fabric lining
- FORCE10® solid nitrile rubber outsole - tested to extraordinary abrasion, heat and cold performance levels
- Ortholite® climate breathable footbed



Full product detail at [rockfall.com/products/zinc](http://rockfall.com/products/zinc)

Full product detail at [rockfall.com/products/spark](http://rockfall.com/products/spark)



REF: RF7000  
**VULCAN**

UK 5-14

EN ISO 20349-1:2017 S3 HI CI HRO SRC Fe

- Flame Retardant full grain black leather stitched with R-TEN® FR thread
- Protective fibreglass toecap and composite anti-penetration flexi-midsole
- Moisture wicking breathable mesh fabric lining
- FORCE10® solid nitrile rubber outsole - tested to extraordinary abrasion, heat and cold performance levels
- Ortholite® climate breathable footbed



REF: RF8000  
**HELIOS**

UK 6-12

EN ISO 20349-1:2017 SB P E WRU FO HI CI HRO M SRC Fe + ASTM F 2413-18 M/I/CEH PR

- Flame Retardant full grain black leather stitched with R-TEN® FR thread
- Protective fibreglass toecap, composite anti-penetration flexi-midsole and internal metatarsal guard
- Moisture wicking breathable mesh fabric lining
- Dual density nitrile rubber outsole - tested to extraordinary abrasion, heat and cold performance levels
- Ortholite® climate breathable footbed



Full product detail at [rockfall.com/products/vulcan](http://rockfall.com/products/vulcan)

Full product detail at [rockfall.com/products/helios](http://rockfall.com/products/helios)



REF: PM36  
**JUPITER**  
UK 6-13

EN ISO 20345:2011 S3 SRA

- Water repellent black nubuck
- Protective steel toecap and composite anti-penetration flexi-midsole
- Moisture wicking breathable mesh fabric lining
- Shock absorbing nitrile rubber outsole
- Activ-Step® PU anti-fatigue comfort footbed



activ  
step

Full product detail at [rockfall.com/products/jupiter](http://rockfall.com/products/jupiter)



REF: TC35  
**ORLANDO**  
UK 6-13 (INC 6.5 and 10.5)

EN ISO 20345:2011 S3 SRA

- Water repellent honey nubuck
- Protective steel toecap and composite anti-penetration flexi-midsole
- Moisture wicking breathable mesh fabric lining
- Shock absorbing nitrile rubber outsole
- Activ-Step® PU anti-fatigue comfort footbed



activ  
step

Full product detail at [rockfall.com/products/orlando](http://rockfall.com/products/orlando)



REF: RF440C  
**FLINT HONEY**  
UK 6-12

EN ISO 20345:2011 S3 HRO SRC

- Water repellent honey nubuck
- Protective fibreglass toecap and composite anti-penetration flexi-midsole
- Moisture wicking breathable mesh fabric lining
- Shock absorbing dual density EVA nitrile rubber outsole
- Activ-Step® PU anti-fatigue comfort footbed



activ  
step

Full product detail at [rockfall.com/products/flint-honey](http://rockfall.com/products/flint-honey)



REF: RF440A  
**FLINT BLACK**  
UK 6-13

EN ISO 20345:2011 S3 HRO SRC

- Polishable water repellent full grain black leather
- Protective fibreglass toecap and composite anti-penetration flexi-midsole
- Moisture wicking breathable mesh fabric lining
- Shock absorbing dual density EVA nitrile rubber outsole
- Activ-Step® PU anti-fatigue comfort footbed



activ  
step

Full product detail at [rockfall.com/products/flint-black](http://rockfall.com/products/flint-black)



REF: RF140  
**VOLTA**  
UK 6-12 (INC 6.5 and 10.5)

EN ISO 20345:2011 SB P E WRU FO SRC + ASTM F 2413-18 M//C/PR EH

- Water repellent ripstop nylon with 3D printed styling and Boa® fit system
- Protective fibreglass toecap and composite anti-penetration flexi-midsole
- Moisture wicking breathable mesh fabric lining
- Shock absorbing dual density EVA nitrile rubber outsole
- Ortholite® climate breathable footbed



SOA

Full product detail at [rockfall.com/products/volta](http://rockfall.com/products/volta)



REF: RF160  
**OHM**  
UK 6-12 (INC 6.5 and 10.5)

EN ISO 20345:2011 SB P E WRU FO SRC + ASTM F 2413-18 M//C/PR EH

- Water repellent full grain black nubuck with breathable mesh panels and Boa® fit system
- Protective fibreglass toecap and composite anti-penetration flexi-midsole
- Moisture wicking breathable mesh fabric lining
- Shock absorbing dual density EVA nitrile rubber outsole
- Ortholite® climate breathable footbed



SOA

Full product detail at [rockfall.com/products/ohm](http://rockfall.com/products/ohm)

**ARE ANY OF THE STYLES PERFECT  
FOR YOUR CUSTOMER BASE?  
ASK US ABOUT PRIVATE  
BRANDING OPTIONS, INCLUDING  
ADDING YOUR CUSTOMERS  
BRANDING, MOQs APPLY.**



REF: RF205  
**HERD**  
UK 6-13

EN ISO 20345:2011 S3 CI HRO WR SRC

- Water repellent oil tanned brown leather
- Protective fibreglass toecap and composite anti-penetration flexi-midsole
- Activ-Tex® waterproof and breathable bootie membrane - tested for 8 hours (5 times longer than EN requirement)
- FORCE10® Dual density PU nitrile rubber outsole - tested to extraordinary abrasion, heat and cold performance levels
- Activ-Step® PU anti-fatigue comfort footbed



ACTIV  
TEX

Full product detail at [rockfall.com/products/herd](http://rockfall.com/products/herd)





REF: PM4010  
**BOSTON**  
UK 6-12 (INC 6.5 and 10.5)

EN ISO 20345:2011 S1P SRC

- Durable and breathable whole TPU upper
- Protective fibreglass toecap and composite anti-penetration flexi-midsole
- Moisture wicking breathable mesh fabric lining
- Shock absorbing dual density EVA nitrile rubber outsole
- Activ-Step® PU anti-fatigue comfort footbed



activ  
step

Full product detail at [rockfall.com/products/boston](http://rockfall.com/products/boston)



REF: PM4050  
**ATLANTA**  
UK 6-12

EN ISO 20345:2011 S3 SRC

- Water repellent single knit upper
- Protective fibreglass toecap and composite anti-penetration flexi-midsole
- Moisture wicking breathable mesh fabric lining
- Shock absorbing dual density EVA nitrile rubber outsole
- Activ-Step® PU anti-fatigue comfort footbed



activ  
step

Full product detail at [rockfall.com/products/atlanta](http://rockfall.com/products/atlanta)



REF: RF108  
**FLY**  
UK 3-13

EN ISO 20345:2011 S1P SRC

- Breathable nylon with 3D printed styling
- Protective fibreglass toecap and composite anti-penetration flexi-midsole
- Moisture wicking breathable mesh fabric lining
- Shock absorbing dual density EVA nitrile rubber outsole
- Activ-Step® PU anti-fatigue comfort footbed



activ  
step

Full product detail at [rockfall.com/products/fly](http://rockfall.com/products/fly)



REF: RF115  
**BANTAM**  
UK 3-13

EN ISO 20345:2011 S1P SRC

- Breathable nylon with 3D printed styling
- Protective fibreglass toecap and composite anti-penetration flexi-midsole
- Moisture wicking breathable mesh fabric lining
- Shock absorbing dual density EVA nitrile rubber outsole
- Activ-Step® PU anti-fatigue comfort footbed



activ  
step

Full product detail at [rockfall.com/products/bantam](http://rockfall.com/products/bantam)



REF: PM4020  
**HARTFORD**  
UK 3-15

EN ISO 20345:2011 S3 SRC

- Water repellent smooth black nubuck
- Protective fibreglass toecap and composite anti-penetration flexi-midsole
- Moisture wicking breathable mesh fabric lining
- Shock absorbing dual density PU outsole
- Anti-fatigue EVA footbed



Full product detail at [rockfall.com/products/hartford](http://rockfall.com/products/hartford)



REF: PM4040  
**BRIDGEPORT**  
UK 3-15

EN ISO 20345:2011 S3 SRC

- Water repellent smooth black nubuck
- Protective fibreglass toecap and composite anti-penetration flexi-midsole
- Moisture wicking breathable mesh fabric lining
- Shock absorbing dual density PU outsole
- Anti-fatigue EVA footbed



Full product detail at [rockfall.com/products/bridgeport](http://rockfall.com/products/bridgeport)



REF: PM4070  
**SEATTLE**  
UK 6-12

EN ISO 20345:2011 S1P SRC

- Navy suede
- Protective steel toecap and composite anti-penetration flexi-midsole
- Moisture wicking breathable mesh fabric lining
- Shock absorbing nitrile rubber outsole
- Anti-fatigue EVA footbed



Full product detail at [rockfall.com/products/seattle](http://rockfall.com/products/seattle)

**OFFER WEARERS ALL DAY  
COMFORT, CHOICE TO LOOK  
AND FEEL GREAT, WITHOUT  
COMPROMISING ON SAFETY.**



PM100  
**UTAH**  
UK 2-14 (INC 6.5 and 10.5)  
EN ISO 20345:2011 S3 SRC

- Water repellent buffalo black leather
- Protective steel toecap and stainless steel anti-penetration midsole
- Moisture wicking breathable mesh fabric lining
- Shock absorbing dual density PU outsole
- Anti-fatigue EVA footbed



Full product detail at [rockfall.com/products/utah](http://rockfall.com/products/utah)



PM102  
**OMAHA**  
UK 2-14 (INC 6.5 and 10.5)  
EN ISO 20345:2011 S3 SRC

- Water repellent buffalo black leather
- Protective steel toecap and stainless steel anti-penetration midsole
- Moisture wicking breathable mesh fabric lining
- Shock absorbing dual density PU outsole
- Anti-fatigue EVA footbed



Full product detail at [rockfall.com/products/omaha](http://rockfall.com/products/omaha)



PM104  
**CHICAGO**  
UK 3-16  
EN ISO 20345:2011 S3 SRC

- Water repellent tan leather
- Protective steel toecap and stainless steel anti-penetration midsole
- Moisture wicking breathable fur lining
- Shock absorbing dual density PU outsole
- Anti-fatigue EVA footbed



Full product detail at [rockfall.com/products/chicago](http://rockfall.com/products/chicago)



PM4002  
**JACKSON**  
UK 3-16  
EN ISO 20345:2011 S3 SRC

- Polishable water repellent smooth black leather
- Protective steel toecap and stainless steel anti-penetration midsole
- Moisture wicking breathable mesh fabric lining
- Activ-Step® shock absorbing PU outsole
- Anti-fatigue EVA footbed



Full product detail at [rockfall.com/products/jackson](http://rockfall.com/products/jackson)



PM4004  
**AUSTIN**  
UK 3-16  
EN ISO 20345:2011 S3 SRC

- Polishable water repellent smooth black leather
- Protective fibreglass toecap and composite anti-penetration flexi-midsole
- Moisture wicking breathable mesh fabric lining
- Activ-Step® shock absorbing PU outsole
- Anti-fatigue EVA footbed



Full product detail at [rockfall.com/products/austin](http://rockfall.com/products/austin)



PM600  
**TRENTON**  
UK 3-13  
EN ISO 20345:2011 S3 SRC

- Polishable water repellent smooth black leather
- Protective fibreglass toecap and composite anti-penetration flexi-midsole
- Moisture wicking breathable mesh fabric lining
- Shock absorbing dual density PU outsole
- Anti-fatigue EVA footbed



Full product detail at [rockfall.com/products/trenton](http://rockfall.com/products/trenton)



TC200  
**WASHINGTON**  
UK 3-13  
EN ISO 20345:2011 S5 SRC

- Waterproof black PVC
- Protective steel toecap and stainless steel anti-penetration midsole
- Mesh to PVC laminate lining
- Shock absorbing virgin PVC outsole



Full product detail at [rockfall.com/products/washington](http://rockfall.com/products/washington)



TC310  
**OREGON**  
UK 6-16  
EN ISO 20345:2011 S1P SRC

- Polishable water repellent smooth black leather
- Protective steel toecap and stainless steel anti-penetration midsole
- Moisture wicking breathable mesh fabric lining
- Activ-Step® shock absorbing PU outsole
- Anti-fatigue EVA footbed



Full product detail at [rockfall.com/products/oregon](http://rockfall.com/products/oregon)

COLD

WOMENS

UNIFORM

MOST POPULAR

MUST HAVES

CONDUCTIVE



RF951  
**RUBY**  
UK 3-8

EN ISO 20345:2011 S3 HRO SRC

- Water repellent full grain waxy brown leather
- Protective fibreglass toecap and composite anti-penetration flexi-midsole
- Moisture wicking breathable mesh fabric lining
- Womens fitting shock absorbing dual density EVA nitrile rubber outsole
- Ortholite® climate breathable footbed



Ortholite®  
climate breathable footbed

Full product detail at [rockfall.com/products/ruby](http://rockfall.com/products/ruby)



REF: RF952  
**TANZANITE**  
UK 3-8

EN ISO 20345:2011 S3 HRO WR SRC

- Water repellent full grain waxy tan leather
- Protective fibreglass toecap and composite anti-penetration flexi-midsole
- Moisture wicking breathable mesh fabric lining
- Womens fitting shock absorbing dual density EVA nitrile rubber outsole
- Ortholite® climate breathable footbed



ACTIV-TEX®

Full product detail at [rockfall.com/products/tanzanite](http://rockfall.com/products/tanzanite)



VX700  
**PEARL**  
UK 3-8

EN ISO 20345:2011 S1P SRC + EN 61340-4-3:2018 ESD

- Navy suede
- Protective fibreglass toecap and composite anti-penetration flexi-midsole
- Moisture wicking breathable mesh fabric lining
- Womens fitting shock absorbing nitrile rubber outsole
- Anti-fatigue EVA footbed



Ortholite®  
climate breathable footbed

Full product detail at [rockfall.com/products/pearl](http://rockfall.com/products/pearl)



VX850  
**JASMINE**  
UK 3-8

EN ISO 20345:2011 S3 SRC

- Water repellent full grain black nubuck
- Protective fibreglass toecap and composite anti-penetration flexi-midsole
- Moisture wicking breathable mesh fabric lining
- Womens fitting shock absorbing dual density EVA nitrile rubber outsole
- Ortholite® climate breathable footbed



Ortholite®  
climate breathable footbed

Full product detail at [rockfall.com/products/jasmine](http://rockfall.com/products/jasmine)



VX950A  
**ONYX BLACK**  
UK 3-8

EN ISO 20345:2011 S3 HRO WR SRC

- Polishable water repellent full grain black leather
- Protective fibreglass toecap and composite anti-penetration flexi-midsole
- Activ-Tex® waterproof and breathable bootie membrane - tested for 8 hours (5 times longer than EN requirement)
- Womens fitting shock absorbing nitrile rubber outsole
- Anti-fatigue EVA footbed



ACTIV-TEX®

Full product detail at [rockfall.com/products/onyx-black](http://rockfall.com/products/onyx-black)



VX870  
**LILY**  
UK 3-8

EN ISO 20345:2011 S1P SRC

- Full grain grey nubuck with breathable mesh panels
- Protective fibreglass toecap and composite anti-penetration flexi-midsole
- Moisture wicking breathable mesh fabric lining
- Womens fitting shock absorbing nitrile rubber outsole
- Anti-fatigue EVA footbed



Full product detail at [rockfall.com/products/lily](http://rockfall.com/products/lily)



VX950C  
**ONYX HONEY**  
UK 3-8

EN ISO 20345:2011 S3 HRO WR SRC

- Water repellent honey nubuck
- Protective fibreglass toecap and composite anti-penetration flexi-midsole
- Activ-Tex® waterproof and breathable bootie membrane - tested for 8 hours (5 times longer than EN requirement)
- Womens fitting shock absorbing nitrile rubber outsole
- Anti-fatigue EVA footbed



ACTIV-TEX®

Full product detail at [rockfall.com/products/onyx-honey](http://rockfall.com/products/onyx-honey)

**OUR ROCK FALL WOMENS RANGE IS ONE OF OUR MOST REGULARLY REVIEWED RANGES AND IS WIDELY SPECIFIED THROUGHOUT INDUSTRY, WORK WITH US TO EXPAND YOUR SALES ON THESE STYLES.**



## SERVICES BY ACTIV-STEP®

Activ-Step® develop premium footwear materials, components and accessories. Their outsoles are developed to give outstanding shock absorption and anti-fatigue benefits.

Wearers can experience improved comfort, durability and an increased lifespan of their footwear as well as enhancing overall foot health and posture.

Activ-Step® focus is squarely on improving foot health for wearers aiming to reduce their discomfort. Foot pains are often the unreported LTI (lost time incidents) for employers.

Alongside their products we offer the Activ-Step® 3Feet Footscan Service.

## WHAT IS THE ACTIV-STEP® 3FEET FOOTSCAN SERVICE?

Activ-Step® 3Feet has been developed to offer a customised arch support option to wearers. 80% of people suffer from foot problems in their adult lives many of which go unreported and undiagnosed. The measurement takes less than a minute and gives wearers the appropriate arch support footbed for their individual feet.

**Wearing the correct footbed reduces the effects of:**

**Plantar Fasciitis, Fatigue, Achilles Tendonitis, Pronation/Supination instabilities and back and knee pain.**

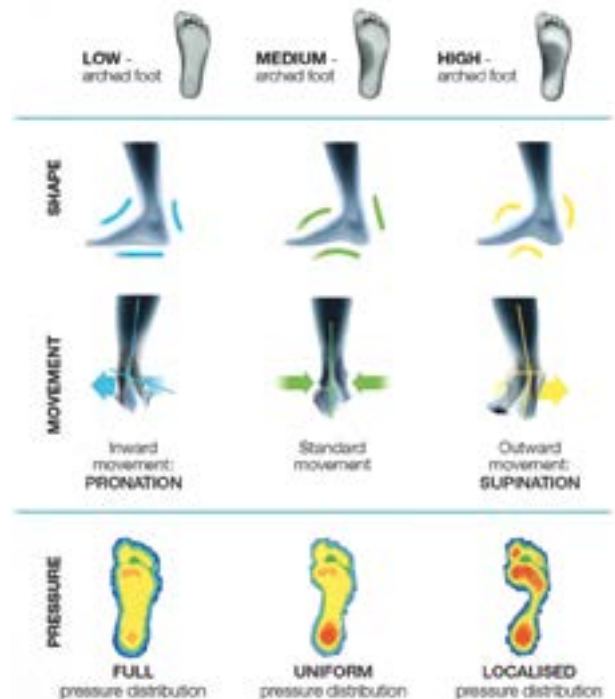
Like all Activ-Step® Footbeds, they have been specifically designed for industrial workplaces and include anti-static stitching and tape for product assurances purposes.



## HERE'S WHAT A WEARER HAD TO SAY

“ First of all, can I say that the Activ-Step® 3Feet footbeds have been outstanding in that during the last 6 weeks I have not used the usual freeze spray and ibuprofen gel I usually need on my feet, as I suffer with Plantar Fasciitis. The condition and being on my feet all day both onshore and offshore required use of the above 2 times a day minimum. The footbeds have been paired with the super light Rock Fall RF160 Ohm boot, which offers a quick release design which outperform any zip or lace boot I have used in the past. The RF160 Ohm boots are very durable and do not have the usual issue of dirty, damaged and stuck zips and with such a lightweight boot has improved my comfort factor by 100%. Can't thank you enough for introducing me to two great products which I have recommended to all my colleagues. ”

## THE DIFFERENT FOOT TYPES



## WHAT DO YOUR FEET NEED? 3FEET OPTIONS

SUPPORTS HIGH ARCHES WHICH CAUSE ACHES AND PAINS IF LEFT UNSUPPORTED HIGH ARCHES CAN COLLAPSE IF THEY ARE LEFT UNMANAGED. THIS CAN ALSO RESULT IN THE WEARER SELECTING ONE SIZE TOO BIG



PROVIDES EXCEPTIONAL ARCH SUPPORT AND TORSION CONTROL (ANKLE SUPPORT) TO WEARERS WITH A "NORMAL" ARCH, WHICH REDUCES THE RISK OF ANY OCCURRENCE OF FUTURE FOOT PROBLEMS



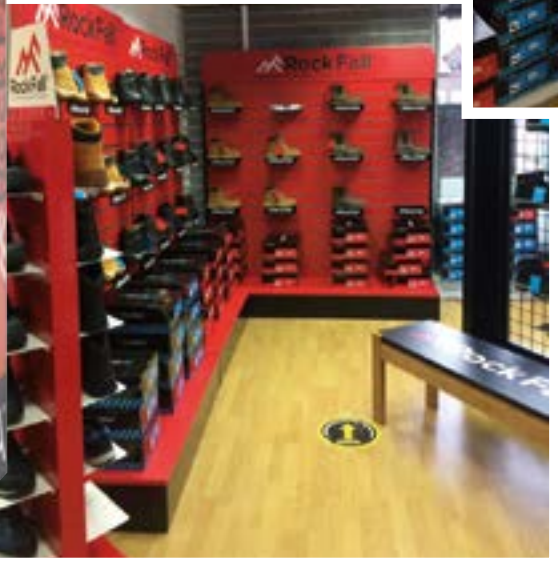
PROVIDES A DEEP HEEL CLIP TO A FLAT ARCH AND STIMULATE A "NORMAL" FOOT SHAPE. WEARERS WITH LOW ARCHES OR FLAT FEET CAN SUFFER FROM JOINT PAINS IF LEFT UNMANAGED



Ready to arrange an Activ-Step® 3Feet session at your site?

Visit [rockfall.com/services/services-by-activ-step/](http://rockfall.com/services/services-by-activ-step/)

FIND OUR  
INDUSTRY DEFINING  
SAFETY FOOTWEAR  
AT ROCKFALL.COM



# ENDLESS MERCHANDISING OPTIONS | LET US DISCUSS YOUR TRADE COUNTER

## ASK US ABOUT

- FREESTANDING DISPLAYS & END OF RACK UNITS
- SLATWALL
- TOOLBOARDS AND BAY TAKEOVERS
- BENCHES & MATS
- FOOTSCANNING MACHINES, ACCESSORIES AND MORE

