

**SONIS**<sup>®</sup>  
**COMMS**  
TEAM COMMUNICATION



# WELL CONNECTED PROTECTION

Sonis® Comms is a powerful communication tool, providing group intercom and active hearing protection for safe teamwork in high-noise environments. Embedded DMC® (Dynamic Mesh Communication) technology creates an autonomous private network for seamless team communication.

The headsets are user-friendly and intuitive to operate via ergonomic buttons on the earcups, hands-free technology, the desktop configuration tool, and JSP Comms mobile app. Sonis® Comms combines comfort and design features established in the development of the Sonis® range with cutting-edge wireless technology to deliver the ultimate protection and unlimited connectivity.




# SONIS<sup>®</sup> COMMS

WITH BLUETOOTH<sup>®</sup> WIRELESS TECHNOLOGY

- TEAM COMMUNICATION
- DMC<sup>®</sup> TECHNOLOGY
- RADIO COMMUNICATION
- LEVEL-DEPENDENT ATTENUATION
- HANDS-FREE SPEECH
- 'HEY SONIS' FEATURE
- EASY SET-UP & MAINTENANCE



- BLUETOOTH<sup>®</sup> CONNECTIVITY
- ENTERTAINMENT AUDIO
- JSP COMMS MOBILE APP



Type	Headband		Mounted	
Battery/Power	Li-ion	AAA	Li-ion	AAA
SNR	SNR 34		SNR 30	
Standards & testing	EN352-1 EN352-4 EN352-6 EN352-8		EN352-3 EN352-4 EN352-6 EN352-8	

# SONIS<sup>®</sup> COMMS

- TEAM COMMUNICATION
- DMC<sup>®</sup> TECHNOLOGY
- RADIO COMMUNICATION
- LEVEL-DEPENDENT ATTENUATION
- HANDS-FREE SPEECH
- 'HEY SONIS' FEATURE
- EASY SET-UP & MAINTENANCE



Type	Headband		Mounted	
Battery/Power	Li-ion	AAA	Li-ion	AAA
SNR	SNR 34		SNR 30	
Standards & testing	EN352-1 EN352-4 EN352-6 EN352-8		EN352-3 EN352-4 EN352-6 EN352-8	

DMC<sup>®</sup> is a registered trademark of Cardo systems LTD. and it affiliates.

# RESEARCH DEVELOP TEST

Sonis® Comms is built on proven design concepts with high-performance materials first specified for the Sonis® range. A product of years of extensive research and revolutionary development in acoustics and passive attenuation performance, Sonis® Comms combines JSP premium hearing protection with DMC® technology powered by Cardo to introduce new communication capabilities to the PPE market.

JSP R&D prototyped a modular ear defender with encapsulated cups, designed to provide a high level of passive attenuation. The clip-in DMC® Control Pack connects electronic functions, including level-dependent attenuation and comms features. Loudspeakers are embedded within foam inserts for fine-tuned acoustic performance.





3D printed prototype parts

Cutting-edge in-house design and testing equipment was key to developing Sonis® Comms. As the COVID-19 pandemic emerged, and access to external laboratories and subjective test methods became limited, JSP were able to keep working. State-of-the-art rapid prototyping 3D printers enabled precise products modifications, and an industry-standard acoustic test fixture allowed the designers to assess results instantly. Thorough testing coupled with feedback from a diverse program of user trials honed the unit to deliver the ultimate site audio solution.



Phase one prototype trials



# SELF HEALING TEAM COMMUNICATION

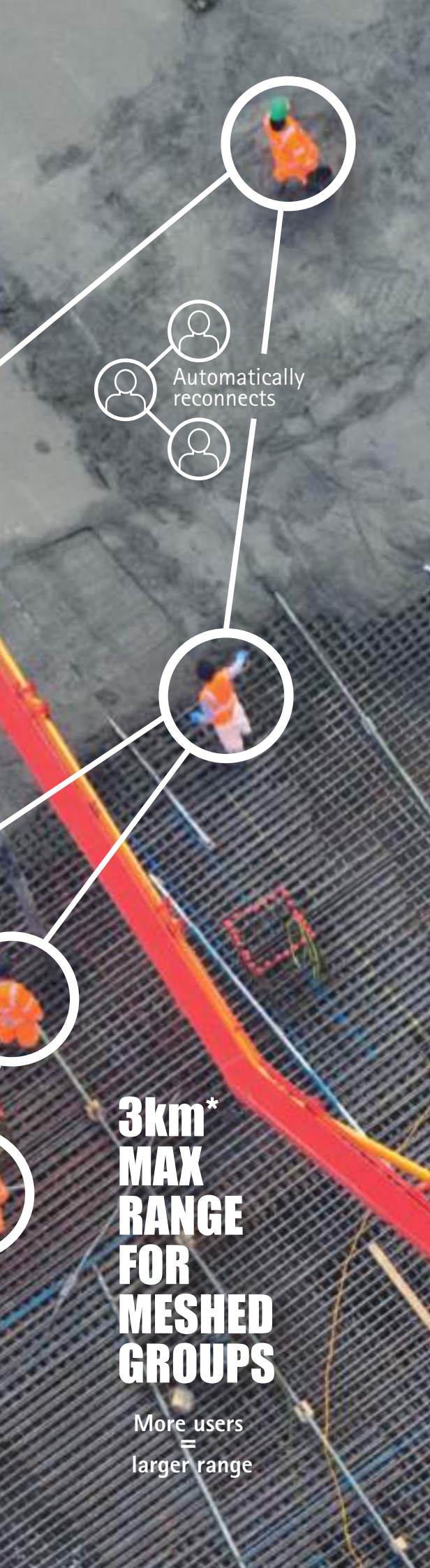
Sonis® Comms embedded team communication creates an autonomous, private network, enabling up to 15 team members stay connected across large sites with no WIFI or mobile internet.



## DMC® TECHNOLOGY

Sonis® Comms uses DMC® (Dynamic Mesh Communication) technology powered by Cardo to establish a wireless mesh intercom system. The dynamic and self-healing network enables teams to move around freely, and allows team members to leave and re-join the network without interrupting the group connection.





Automatically  
reconnects

**3km\***  
**MAX**  
**RANGE**  
**FOR**  
**MESHED**  
**GROUPS**

More users  
=  
larger range



### **100% AUTONOMOUS NETWORK**

Autonomous intercom system enables effective team communication in remote locations with no internet or mobile phone coverage.



### **FULL DUPLEX COMMUNICATION**

Full duplex system allows all users to speak without waiting for transmissions to end, making sure no messages are lost or cut off.



### **STRENGTH IN NUMBERS**

Each Sonis® Comms headset emits a signal, acting as a mini base station, to strengthen group connection with every member added.



### **MEDIUM-RANGE CONNECTIVITY**

Teams can communicate at a range of up to 3km. Users can travel up to 800m from another headset and maintain connection.\*



### **OUT OF RANGE NOTIFICATION**

Sonis® Comms notifies the user when connection to the group network is lost and reconnects automatically once back in range.



### **EMERGENCY ALERTS**

Emergency alerts enable users to contact teammates for assistance hands-free from Sonis® Comms headsets.



### **MULTI-CHANNEL COMMS**

Groups can use separate channels, enabling multiple teams to work and communicate independently in the same location.



### **SELF HEARING**

Audio feedback allows the user to hear their own speech over background noise, for confidence in voice communications.



### **CELLULAR EXTENSION**

With the cellular extension feature, two remote groups can connect to a shared network, creating an intercom system for up to 30 users.

\*Range may be affected by local legislation, terrain, structures, physical obstacles and number of units connected to the network.

# PERFORMANCE MATTERS

Sonis® Comms delivers high-performance hearing protection and cutting-edge communication technology. Packed with features and connectivity, the headsets run with low power consumption to optimise battery life for over 9 hours use on a single charge.



## LEVEL-DEPENDENT

Level-dependent attenuation amplifies safe sounds, such as speech and warning signals, and attenuates high noise to produce a sound output level of 82 dB at the ear.



## PASSIVE PROTECTION

Sonis® Comms headsets provide passive attenuation to an SNR level of 34 dB (Headband) / 30 dB (Mounted) for protection against harmful noise.



## TWO-WAY RADIO

Radio connectivity and built-in PTT button allow seamless integration with PMR systems. Two-way radio sharing transmits radio communications to an intercom group.





### **LOW POWER CONSUMPTION**

Sonis® Comms operates with low power consumption for long battery life, offering over 9 hours continuous use with all features enabled.



### **VOICE RECOGNITION**

The boom microphone detects and isolates speech for clear, hands-free communication. To mute, simply move the mic to the upright position.



### **'HEY SONIS'**

Voice activation engine allows the user to control the headset by saying 'Hey Sonis' followed by an instruction for easy hands-free operation.

# COMFORT & COMPATIBILITY

Designed for extreme comfort and intuitive operation, Sonis® Comms headsets are reversible with adjustable earcups and large, ergonomic buttons. Voice-recognition directional boom microphone enables hands-free communication on the job.

## COMPATIBILITY

Sonis® Comms Mounted are tested and certified for use with EVO® helmets, and fully compatible with EVOGuard® visor systems for complete above-the-neck protection.



## ADJUSTABLE FIT

The earcups can be pivoted and adjusted to obtain the perfect fit. Stainless steel arms provide even distribution of pressure for a secure fit and high levels of protection.



## INSTRUCTIONAL VIDEOS AVAILABLE

Comprehensive instructional videos can be found by visiting the JSP YouTube page or by scanning the QR code: <https://jspsafety.info/Sonis-Comms>



## **BOOM MICROPHONE**

Boom microphone is lightweight with voice-recognition software. To mute, simply move the mic to the upright position.

## **COMFORT**

The force exerted by the headband and pivot arms works together with the cushion surface area, providing the optimum pressure for comfort throughout extended use.

## **ERGONOMIC DESIGN**

Headsets are reversible with large ergonomic buttons. Wear in either orientation for easy left- or right-handed operation, overcoming problems with limited dexterity.

## **HYGIENE**

Earcups, cushions, headband and adaptors are easy to wipe clean. Hygiene kits enable users to replace cushions and foam inserts using a simple click to fit system.



# QUICK SETUP & MAINTENANCE

When switched on, Sonis® Comms automatically establishes an autonomous network connection. The JSP Configuration Tool makes it simple to set up a whole site in moments. Devices are easy to charge and keep clean, with a range of spares available to maintain the modular system.

## LANGUAGE OPTIONS

Select language for system menus and 'Hey Sonis' voice activation engine features from a wide range of built-in options.

## DEVICE SETTINGS

Control microphone sensitivity and audio playback settings for Sonis® Comms headsets with the JSP Configuration Tool desktop app.

## GROUP MANAGER

Use the desktop app to manage groups, creating intercom networks that connect automatically when devices are switched on.

## EMERGENCY CALL SETTINGS

Input the relevant emergency telephone number in the desktop app to enable quick emergency dialling from Sonis® Comms headsets.



**DOWNLOAD  
CONFIGURATION  
TOOL HERE**

[jpsafety.info/JSPComms](https://jpsafety.info/JSPComms)



### **SIMPLE CHARGING**

Sonis® Comms Lithium-Ion battery is easy to charge from PC or mains using the USB-C cable provided. Fast charging for full battery in 3h from flat.

### **EFFORTLESS MAINTENANCE**

Sonis® Comms headsets are effortless to maintain with modular design and a wide range of user-replaceable spares.

# WORK SMART

Sonis® Comms with Bluetooth® wireless technology integrates calls and audio playback from a mobile device. Connect the headset to a smartphone for seamless mobile communication and entertainment audio features.

## ENTERTAINMENT AUDIO

Entertainment features for music streaming and other audio playback. Sound output is limited to a safe level within the headset to prevent hearing damage.

## EMERGENCY CALLING

Speed-dial emergency calling ensures help is always on hand. Enter the relevant emergency number in settings to enable direct dialling from Bluetooth® enabled Sonis® Comms headsets.

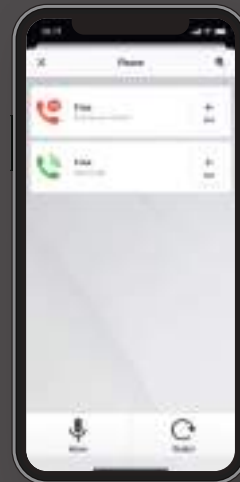
### Quick access

All sound, communication and music features are available in a simple control menu.



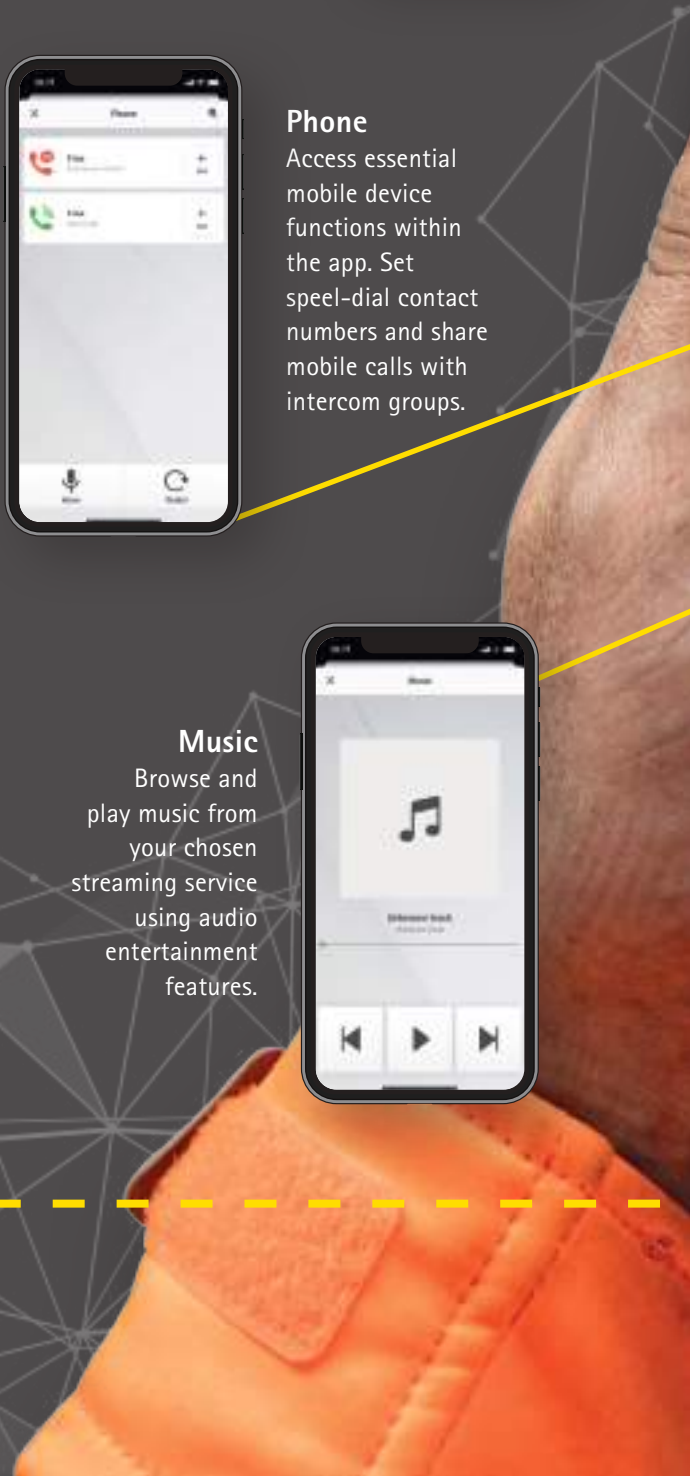
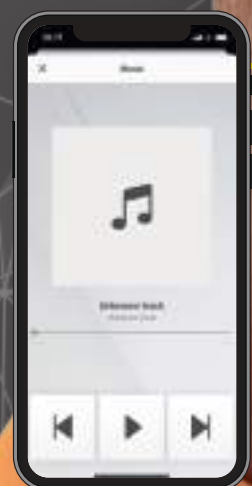
### Phone

Access essential mobile device functions within the app. Set speed-dial contact numbers and share mobile calls with intercom groups.



### Music

Browse and play music from your chosen streaming service using audio entertainment features.

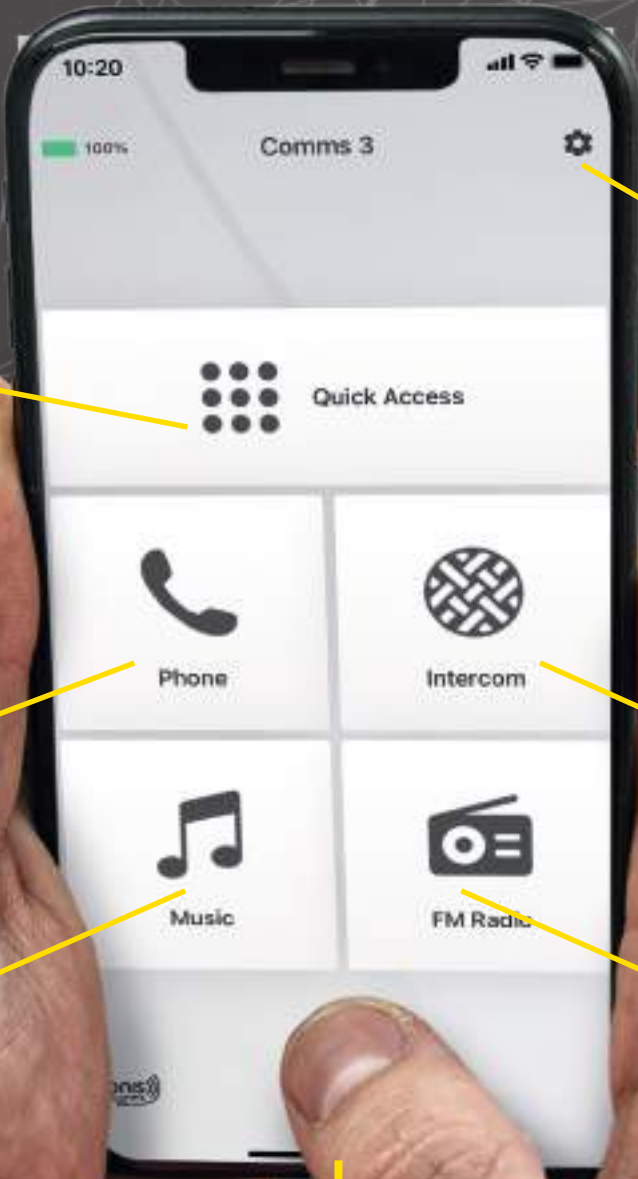




SCAN FOR  
MAC IOS



SCAN FOR  
ANDROID



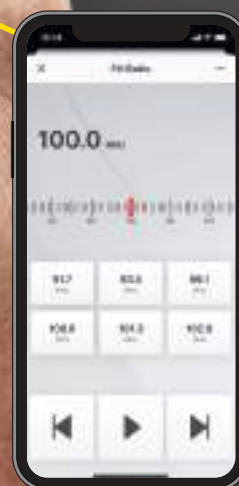
### Settings

Personalise Sonis® Comms audio and system settings effortlessly in the settings menu.



### Intercom

Select intercom group and switch between channels for fine-tuned audio.



### FM Radio

Choose from six pre-set radio channels, or scan to find a new station.

The JSP Comms free mobile application provides a smartphone interface for setting up and operating the headset. Use the app to set up a network, make calls, and manage connectivity and audio options.



### SONIS® COMMS HEADBAND EAR DEFENDER WITH BLUETOOTH® WIRELESS TECHNOLOGY

EN 352-1, SNR=34

Frequency (Hz)	H = 34	M = 31	L = 25	SNR = 34
<b>AEB081-5A7-N00</b>	Sonis® Comms headband ear defender with Bluetooth® wireless technology			Qty 1



Certified compatible with:



### SONIS® COMMS MOUNTED EAR DEFENDER WITH BLUETOOTH® WIRELESS TECHNOLOGY

EN 352-3, SNR=30

Frequency (Hz)	H = 31	M = 27	L = 19	SNR = 30
<b>AEB081-5C7-N00</b>	Sonis® Comms mounted ear defender with Bluetooth® wireless technology			Qty 1



### SONIS® COMMS HEADBAND EAR DEFENDER

EN 352-1, SNR=34

Frequency (Hz)	H = 34	M = 31	L = 25	SNR = 34
<b>AEB081-4A8-N00</b>	Sonis® Comms headband ear defender			Qty 1



Certified compatible with:



### SONIS® COMMS MOUNTED EAR DEFENDER

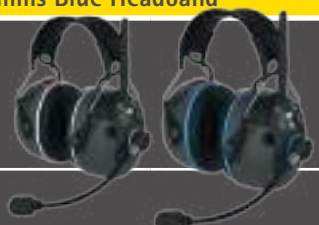
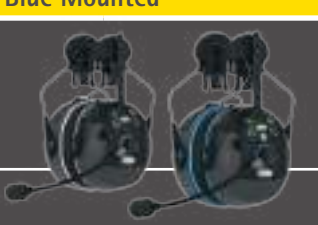
EN 352-3, SNR=30

Frequency (Hz)	H = 31	M = 27	L = 19	SNR = 30
<b>AEB081-4C8-N00</b>	Sonis® Comms mounted ear defender			Qty 1

## SPARE PARTS LIST:

AEB081-4A0-100	Headband Unit (white plates) without Battery Pack, DMC® Control Pack or Antenna	AEB850-000-100	Hygiene Kit (white plates)
AEB081-5A0-500	Headband Unit (blue plates) without Battery Pack, DMC® Control Pack or Antenna	AEB081-600-000	Antenna
AEB081-4C0-100	PPE Mounting Unit (white plates) without Battery Pack, DMC® Control Pack or Antenna	AEB082-000-000	Sonis® Comms Carry Case
AEB081-5C0-500	PPE Mounting Unit (blue plates) without Battery Pack, DMC® Control Pack or Antenna	AEB081-000-000	AAA Battery Pack
AEB081-700-000	USB & Jack Socket plugs and Wind Sock for Boom Microphone	AEB081-200-000	DMC® (Bluetooth® & Radio version)
AEB081-100-000	Lithium Ion Battery Pack	AEB840-000-500	Hygiene Kit (blue plates)
AEB081-300-000	DMC® Control Pack	AEB081-900-000	Boom Microphone for Repair - To be fitted at factory -



		Sonis® Comms Headband / Sonis® Comms Blue Headband			Sonis® Comms Mounted / Sonis® Comms Blue Mounted		
STANDARDS	EN 352-1 EN 352-4 EN 352-6 EN 352-8			EN 352-3 EN 352-4 EN 352-6 EN 352-8			
							
SNR	34 dB			30 dB			
H,M,L	H = 34 M = 31 L = 25			H = 31 M = 27 L = 19			
CRITERION LEVELS	H	M	L	H	M	L	
	Level 10	Level 10	Level 10	Level 10	Level 10	Level 10	
	>110 dB	>110 dB	>110 dB	>110 dB	>110 dB	>110 dB	
SOUND OUTPUT LIMIT: 82 dB							
MATERIALS	Headband	TPE, stainless steel		Adaptors	Acetal, nylon		
	Arms	Acetal, stainless steel		Arms	Acetal, stainless steel		
	Cups	ABS		Cups	ABS		
	Plates	ABS		Plates	ABS		
	Cushions	TPU skin, foamed polymer		Cushions	TPU skin, foamed polymer		
	Inner foam	PU foam		Inner foam	PU foam		
WEIGHT	Li-ion	539g		Li-ion	559g		
	AAA (spare only)	544g (batteries fitted) 510g (no batteries fitted)		AAA	564g (batteries fitted) 530g (no batteries fitted)		
BATTERIES	<b>Specification</b>			IP CLASS	IP rating: IP53		
	Li-ion	Li-ion rechargeable, 2000mAh, 3.7V, 7.4Wh					
	AAA (spare only)	AAA Alkaline replaceable (3 x AAA required)		TEMPS	Operating temperature	-10°C to +55°C	
	<b>Run times</b>				Storage temperature	-10°C to +55°C	
	All features	9 hours +			Charging temperature	-10°C to +55°C	
	FM radio only	24 hours (Li-ion) / 10 hours (AAA)		RANGE	Group range	3km (dependent on local legislation, terrain, structures, physical obstacles and number of units connected to the network)	
	Intercom only	26 hours (Li-ion) / 12 hours (AAA)			User range	800m (users can travel up to 800m from another connected headset)	
	Level-dependent only	46 hours (Li-ion) / 24 hours (AAA)		CONFORMITY	2016/425 (EU)	Personal protective equipment	
	Bluetooth® only	60 hours (Li-ion) / 30 hours (AAA)			2014/53/EU	Radio equipment directive (RED)	
	<b>Li-ion battery charging</b>				EC 1907/2006	REACH	
	Charge time	3 hours			ISO 13688	Chemical innocuousness	
	Input cable	USB-C 5VDC, 1.0A (included)			2015/863	RoHS	
	<b>Li-ion battery approvals</b>				2014/30/EU	Electromagnetic compatibility directive (EMC)	
	IEC 62133-2	Lithium battery safety			IEC 62368-1	Audio/video, info and communication technology equipment	
	UN38.3	Lithium battery transport			EN 300 328	Products with radio technologies	
	UN3480	Class of battery – lithium ion batteries, rechargeable, without equipment			EN 50581	Electrical and electronic products testing	
					EN 301 489-17	EMC and Radio spectrum Matters (ERM); EMC standard for radio equipment	
FREQUENCY	Sonis® Comms			Wi-Fi 2.4GHz			
	Channel	Frequency	Channel	Frequency	Frequency Range		
	1	2.405	1	2.412	2.401-2.423		
	2	2.415	3	2.422	2.411-2.433		
	3	2.425	5	2.432	2.421-2.443		
	4	2.435	7	2.442	2.431-2.453		
	5	2.445	9	2.452	2.441-2.463		
	6	2.455	11	2.462	2.451-2.473		
	7	2.465	13	2.472	2.461-2.483		
8	2.475	14	2.484	2.473-2.495			



# MANUFACTURING FOR SAFETY, HEALTH & WELLBEING




AVAILABLE FROM HEATHBROOK WORKWEAR SOLUTIONS

[WWW.HBCW.CO.UK](http://WWW.HBCW.CO.UK)

EMAIL: [SALES@HBCW.CO.UK](mailto:SALES@HBCW.CO.UK)

TEL: +44 (0)118 931 3200

 **HeathBrook**<sup>®</sup>

**GENERAL DISCLAIMER**

It is the responsibility of Employers and Individuals to carry out proper risk assessment by qualified Health and Safety personnel of any hazardous situation or activity. The Seller shall not be held liable for any loss, damage or injury sustained where no risk assessment has been carried out.

**DATA**

Product images, dimensions and descriptions are statements of opinion, provided for information only and form no part of the contract. Reasonable changes to designs and materials may be made without notice by the Seller without affecting the validity of the contract. All measurements

are approximate. All information in this publication has been checked for accuracy. However, the Seller cannot accept any liability for errors or omissions. The Seller reserves the right to alter specifications or to withdraw products from range without prior notice. No reproductions of any part of this catalogue may be made without the Seller's consent.